

Coaxial connectors 4.3-10

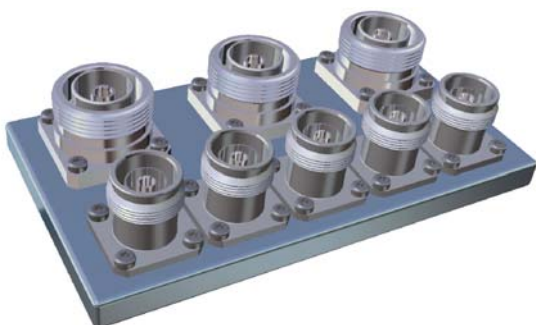


Key features

- Compactness
 - Connector fitting in 1 inch flange (25.4 mm)
- Low weight
 - Up to 60% lighter compared to bigger RF interfaces
- Excellent electrical performances
 - Very good RL/IL performance
 - High screening efficiency
 - Low PIM
- High power performance for its form factor

Coaxial connectors 4.3-10

HUBER+SUHNER as a leading global supplier of RF product is an active partner of a developing group designated to provide an innovative solution for the telecom market. The new 4.3-10 connector system is designed to meet the rising performance needs of mobile network equipment and at the same time reducing its size supporting the ongoing space reduction requirements. The interface design has been filed to IEC and has the potential to become the standard connector system for the above mentioned market.



Benefits

- High density module design
 - Due to the smaller flange and compactness
 - Type 2, 3 minimum pitch 25.4 mm (no torque wrench)
- Light weight modules
 - Due to low weight components and the possibility of designing modules with thinner wall thickness (no torque or small torque required)
 - Bulkhead solutions possible
- Flexibility in connector choice
 - Due to the 3 different plug design
- Reliable electrical performance
 - The separation of electrical and mechanical planes results in easier installation possibilities

This new interface offers very low PIM performance together with weight and compactness advantages. A key feature of this connector is the separation of electrical from mechanical plane, which implies a lower coupling torque and the possibility of offering the connector plug with screw, hand screw and quick lock design, thus simplifying the installation effort and offering for all mechanisms a very high electrical performance.

Coaxial connectors 4.3-10

Connector plugs (male)

Screw (type 1)	Hand screw (type 2)	Quick-lock (type 3)
		
Torque 5 Nm		

Connector jacks (female)

One universal type



Female type meets all male types

4.3-10 is available in many variations including jacks flange or bulkhead types, straight and right angles connector plugs for different cable sizes.

Specifications and requirements

Interface key specifications		Requirements
RL/IL	DC - 4 GHz 4 - 6 GHz	≥ 36 dB ≥ 32 dB
Power		500 W @ 2 GHz @ 90 °C
Screening efficiency	type 1	≥ 110 dB @ DC to 6 GHz
	type 2, 3	≥ 90 dB @ DC to 3 GHz ≥ 80 dB @ 3 to 6 GHz
PIM		-166 dBc @ 2 x 43 dBm -160 dBc @ 2 x 46 dBm
Water tightness (interface, mated)		IP68 (@ 25 m, 1 hour)

Coaxial connectors 4.3-10

Measuring adaptors

PIM adaptors		
4.3-10 / 7/16	4310 female, 716 male	33_716-4310-50-1
	4310 male (type 1), 716 male	32_4310-716-50-X1
	4310 male (type 1), 716 female	33_4310-716-50-X1

Precision adaptors		
4.3-10 / precision N	4310 male (type 1), precision N female	33_4310-N-50-X1
	4310 female, precision N male	33_N-4310-50-1
4.3-10 / PC 3.5	4310 male (type 1), precision PC35 female	33_4310-PC35-50-X1
	4310 female, precision PC35 male	33_PC35-4310-50-1

LISCA assemblies (jumpers)

Besides our existing LISCA portfolio following configurations can be ordered:

		Example:	LIS-C9 F-11	431X-16	431X-02000	51
		Product name				
SUCOFEED_1/4_HF	C5	Cable type				
SUCOFEED_3/8_HF	C7					
SUCOFEED_1/2_HF	C9					
SUCOFEED_1/2	C12					
Flame retardant: F PE: no indication						
Straight male	11	Pattern of connector	1			
Right angle male	16					
Straight female	21	Pattern of connector		2		
4.3-10	Type 1 431X Type 2 431Y Type 3 431Z	Connector interface		1	2	
		Assembly length in mm				
Jumper performance code	example: 51	Technical performance				

Other products with 4.3-10 are available on request.